



Your Printer Solutions Company
PEAK Technologies, Inc.
A Platinum Equity Company
187 Crosby Road
Dover, New Hampshire USA 03820
(603) 742-7095

**MTP-22XX
&
MTP-28XX
Flash Update Procedure
Using HyperTerminal**

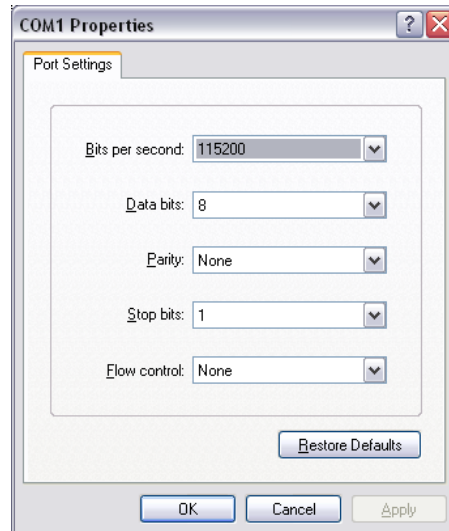
Introduction

This procedure describes how to update the firmware on the Telpar MTP-28XX and MTP-22XX thermal printers. This operation is performed through the serial port and the serial interface of the printer. The materials required for this are a Windows PC with a terminal program like HyperTerminal, a serial cable, and a serial interface on the printer.

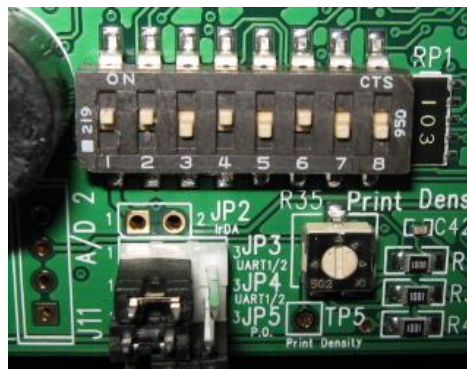
1. Connect a serial cable between a Windows PC and J9 on controller board.



2. Start HyperTerminal with settings at 115,200-N-8-1.
 - a. Start > Programs > Accessories > Communications > HyperTerminal
 - b. Name Configuration
 - c. Select Comm Port
 - d. Configure port settings
 - i. 115,200 Baud
 - ii. 8 Data bits
 - iii. No Parity
 - iv. Flow Control – None



3. Set Printer Switch 1 Position 1 to ON.



4. Turn the printer power on.
 - a. The Printer LED's will be cycling a pattern.
 - b. A Menu will appear in the HyperTerminal window.

```

C1 - HyperTerminal
File Edit View Call Transfer Help
=====
=      4. Command: 'q' to quit JLinkSTR91X.exe      =
=      Download firmware:                          =
=      1. Use Hyperterm.exe with settings 15200-N-8-1 =
=      2. Place board in Download Mode.            =
=           Set Switch 1 Position 1 to ON.         =
=      3. Power On board.                          =
=           Green LED will blink twice, pause and repeat. =
=           Main Menu is displayed on HyperTerminal window.=
=      4. Press 1 to erase flash.                   =
=      5. Press 2 and use Send File/Ymodem to download =
=           desired file to flash.                 =
=      6. Press 3 to verify flash.                 =
=      7. Place board in Execute Mode.             =
=           Set Switch 1 Position 1 to OFF.        =
=      8. Press 4 to exit download and execute flash. =
=====
===== 300800 Flash Main Menu =====
=  1 - Erase Flash ----- 1 =
=  2 - Download Image To the STR91x Internal Flash ---- 2 =
=  3 - Verify Flash ----- 3 =
=  4 - Execute The New Program ----- 4 =
=  5 - Program Info ----- 5 =
=====
>

```

5. Press 'Enter' to display 'In-Application Programming' Menu.
6. Press '1' to Erase Flash.
 - a. Wait for operation to complete.
7. Press '2' to download flash.
8. Select Hyperterm Menu item 'Transfer->Send File...'
9. Browse for flash file to download.
10. Select 'Ymodem' for the Protocol.
11. Press 'Send'.
 - a. Wait for download to complete.
12. Press '3' to verify flash.
13. Press '4' to execute new program in flash.
14. Turn the printer power off.
15. Set Printer Switch 1 Position 1 to OFF.
16. Print a Self-Test to verify printer operation and firmware version.
 - a. Hold Feed Button while turning printer power on.
 - b. Release Feed button after one beep.