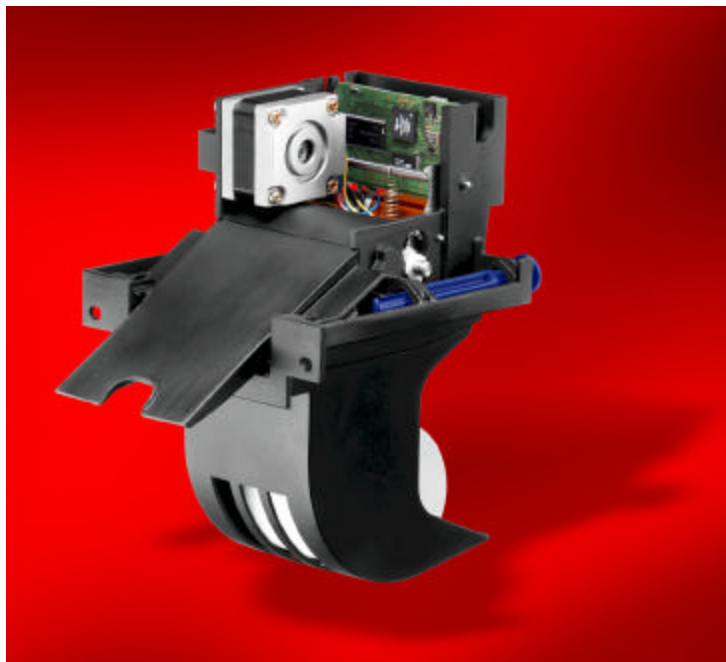




800-872-4886 info@telpar.com 972-420-4700

C-56™ Thermal Receipt Printer

The ideal solution for low-cost receipt printing!



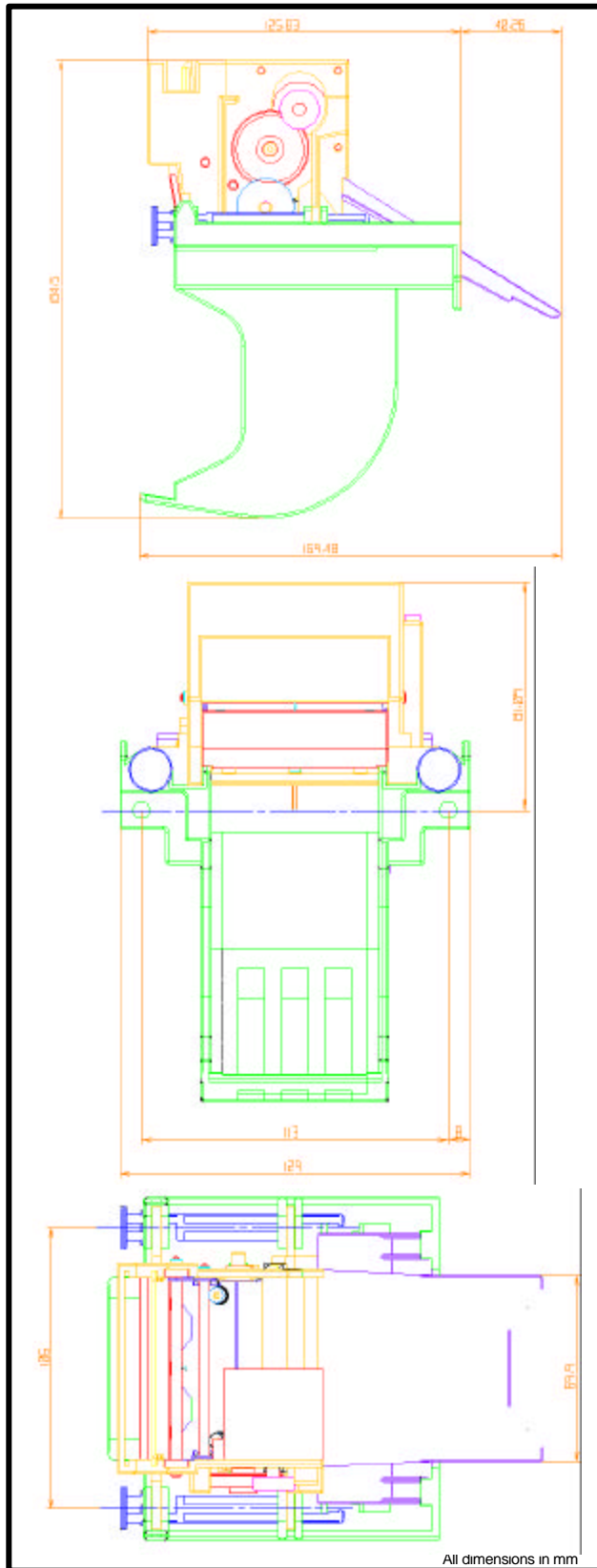
Perfect for receipting!

- Economically priced
- High speed USB and RS232 serial interface
- Prints up to 220 mm/second
- Paper width of 58-60 mm
- Patented tear bar design prevents vandalism

The Telpar C-56 Thermal Receipt Printer is the ideal printer for receipt printing. Handling a paper width of 58-60 mm, the Telpar C-56 with USB interface prints at speeds up to 220 mm/second (8.6 inches/second)! A unique, patented tear bar assembly prevents vandals from pulling all of the paper out of the printer; it tears off, if this is attempted. The design includes an integral chute that protrudes from the front of your panel, making mounting and integration simple. The Telpar C-56 printer will pull a 4 inch diameter paper roll from its integral paper tray to provide extended operation between refills. A single sensor detects “out of paper” and “paper low”. The Telpar C-56 printer is one of the most cost-effective receipting solutions you’ve ever encountered!

Have a receipt printer need? Let Telpar and the C-56 handle it for you!

Telpar C-56™ Thermal Receipt Printer



Specifications

Technology: Direct Thermal
Print Speed: Up to 8.6 ips (220 mm/sec)
Resolution: 203 dpi (8 dots/mm)
Total No. Dots: 448

Printhead Life

Abrasion (based on 12.5% print density) 100 km of paper

Electrical: 100 million dot pulses

Graphic Driver: Windows® 2000/XP, Linux

Bar Codes:

Internally Generated: UPC-A, UPC-E, EAN-13, EAN-8, Code 39, Interleaved 2 of 5, Code 128, Codabar

Externally Generated: Any, generated by Windows® standard GDI file by host

Paper Width: 2.28 to 2.36 inches (58-60 mm)

Printable Width: 2.20 inches (56 mm)

Paper Weight: 50 to 60 g/m²

Paper Capacity: 4 inch (100 mm) roll diameter

Interface Type: USB 1.1

Operating Voltage: 24 VDC± 5%

Power Consumption:

In standby, approx. 12 VA

Typical, approx. Print speed dependent

Peak, approx. Print speed dependent

Tear Bar Type: Full cut/vandal resistant

Dimensions (WxHxD):

Fits in an envelope

5.1 x 7.3 x 5.5 inches
(130 x 186 x 139 mm)

Temperature Range

Operating: -30°C to +70°C

For Guaranteed Print Quality: +5°C to +50°C

Storage: -40°C to +85°C

Humidity

Operating: 20%-90% RH, non-condensing

For Guaranteed Print Quality: 20%-80% RH, non-condensing

Storage: 5%-95% RH, non-condensing

All specifications subject to change without prior notice.
"Windows" is a trademark of Microsoft Corporation.



1550 Lakeway Dr. #500 Lewisville, TX 75057

Phone: 972-420-4700 Fax: 972-221-5627

Web: www.telpar.com Email: info@telpar.com

November 22, 2004